



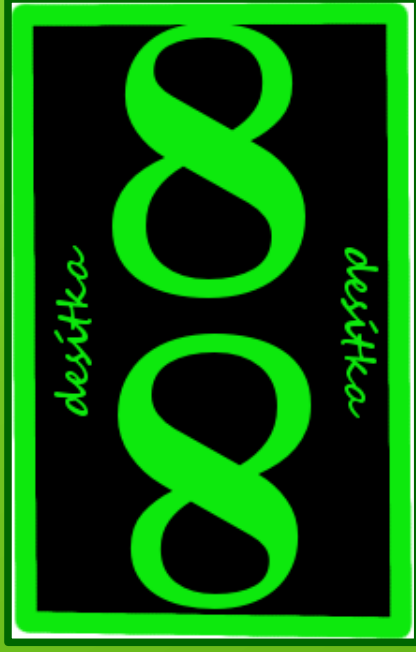
ABAKU

Praha 23.2.2016

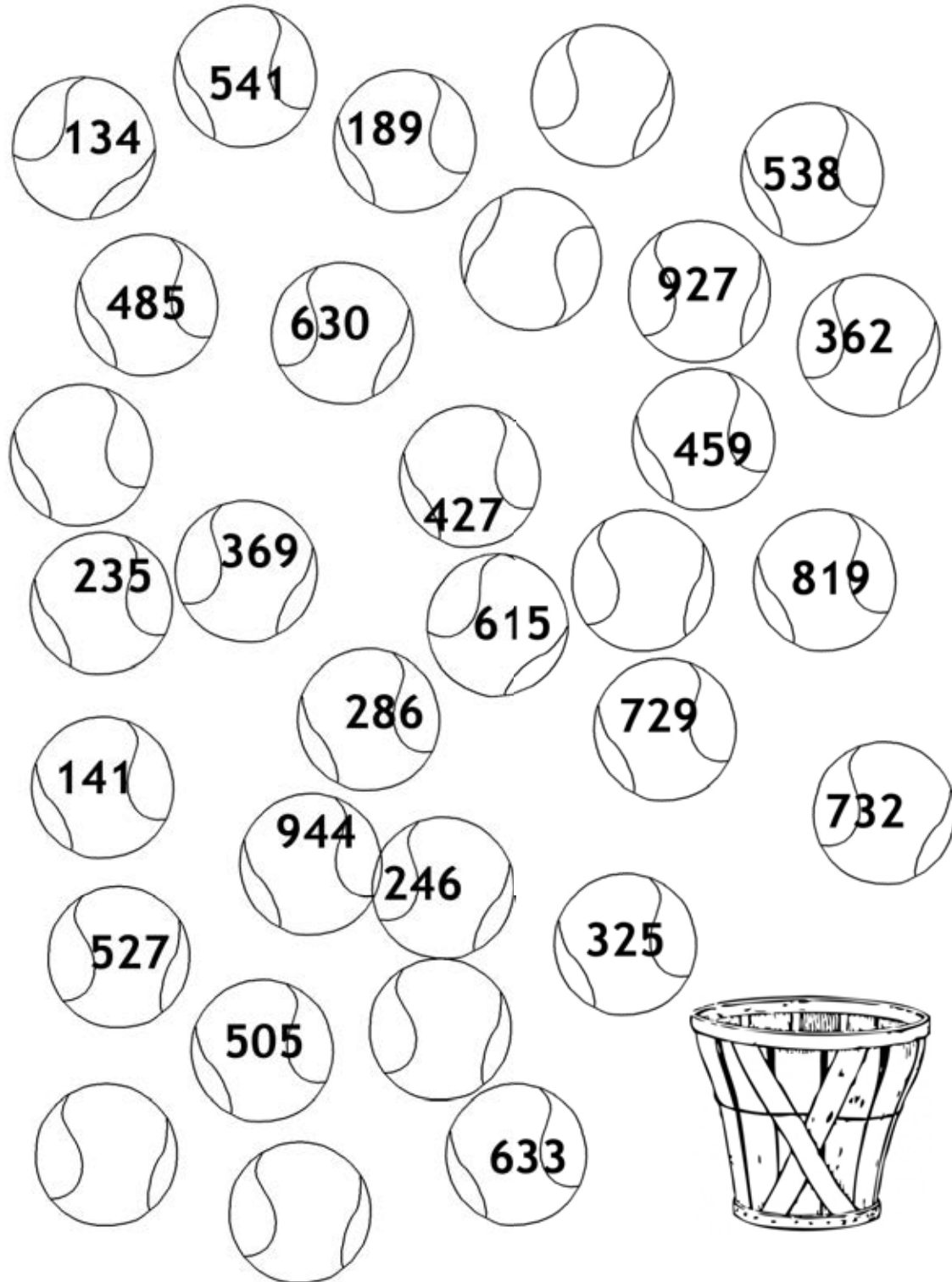


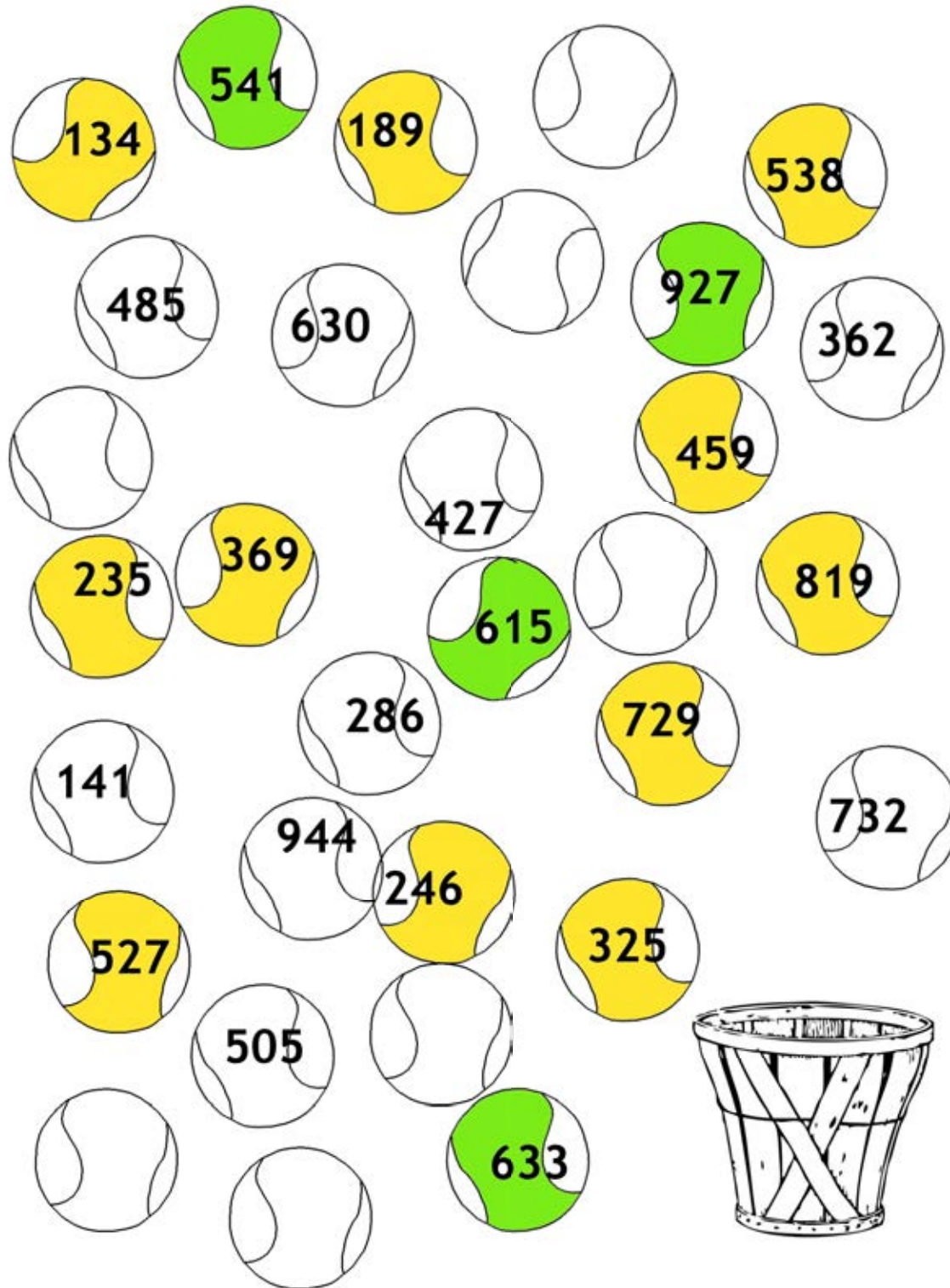
Alena Vávrová











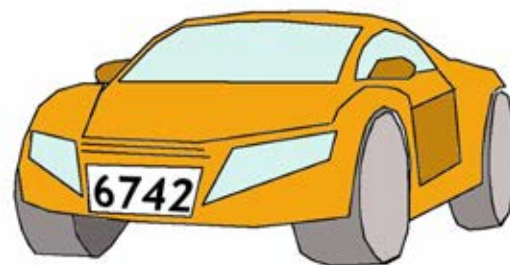
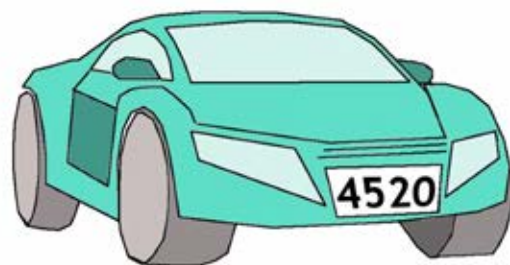
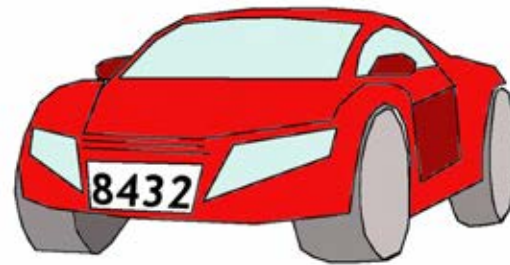
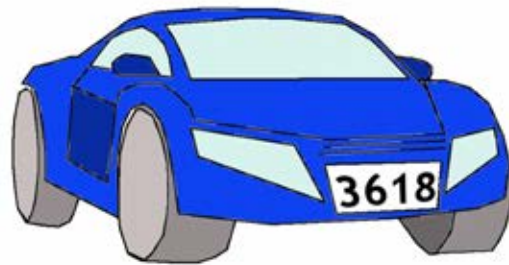
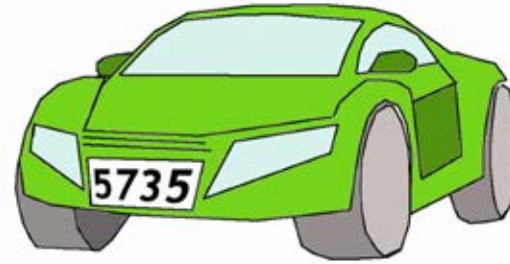
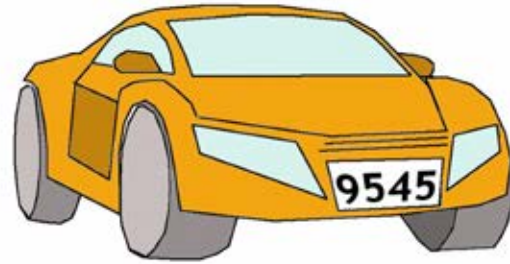
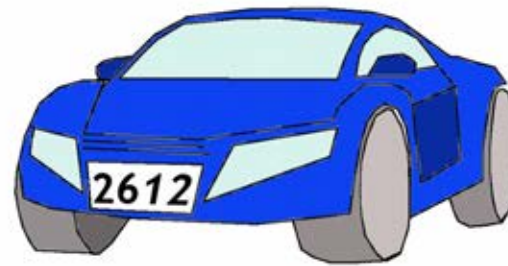
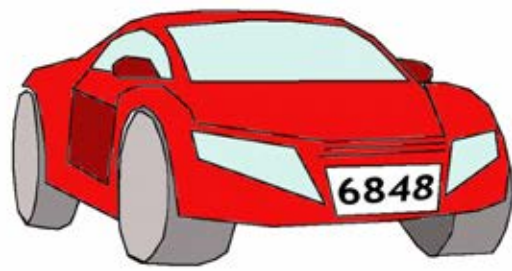












**Hráči ABAKU
bydlí
v Plusíkové**



$$32 : 4 = 8$$

$$2 \cdot 4 = 8$$

$$2^2 = 4$$



Hráči ABAKU
bydlí
v Plusíkově



$32 : 4 = 8$
 $2 \cdot 4 = 8$
 $2^2 = 4$



Plusdorf (Německo)



Plusiekovo (Slovensko)



ABAKUřada



1 5 6 9 0 1 4 6 8 4 8 9 2 9 1 0 1

ABAKUřada



1 5 6 9 0 1 4 6 8 4 8 9 2 9 1 0 1

$$1+5=6$$

$$56+90=146$$

$$6.8=48$$

$$89+2=91$$

$$15-6=9$$

$$14-6=8$$

$$84+8=92$$

$$92+9=101$$

$$15.6=90$$

ABAKUřada podruhé



5 6 7 8 9 7 2 9 5 4 5 4 9 7 7 1 4

ABAKUřada podruhé



$$56:7=8$$

$$8.9=72$$

$$9-5=4$$

$$5+4=9$$

$$7+7=14$$

$$97-2=95$$

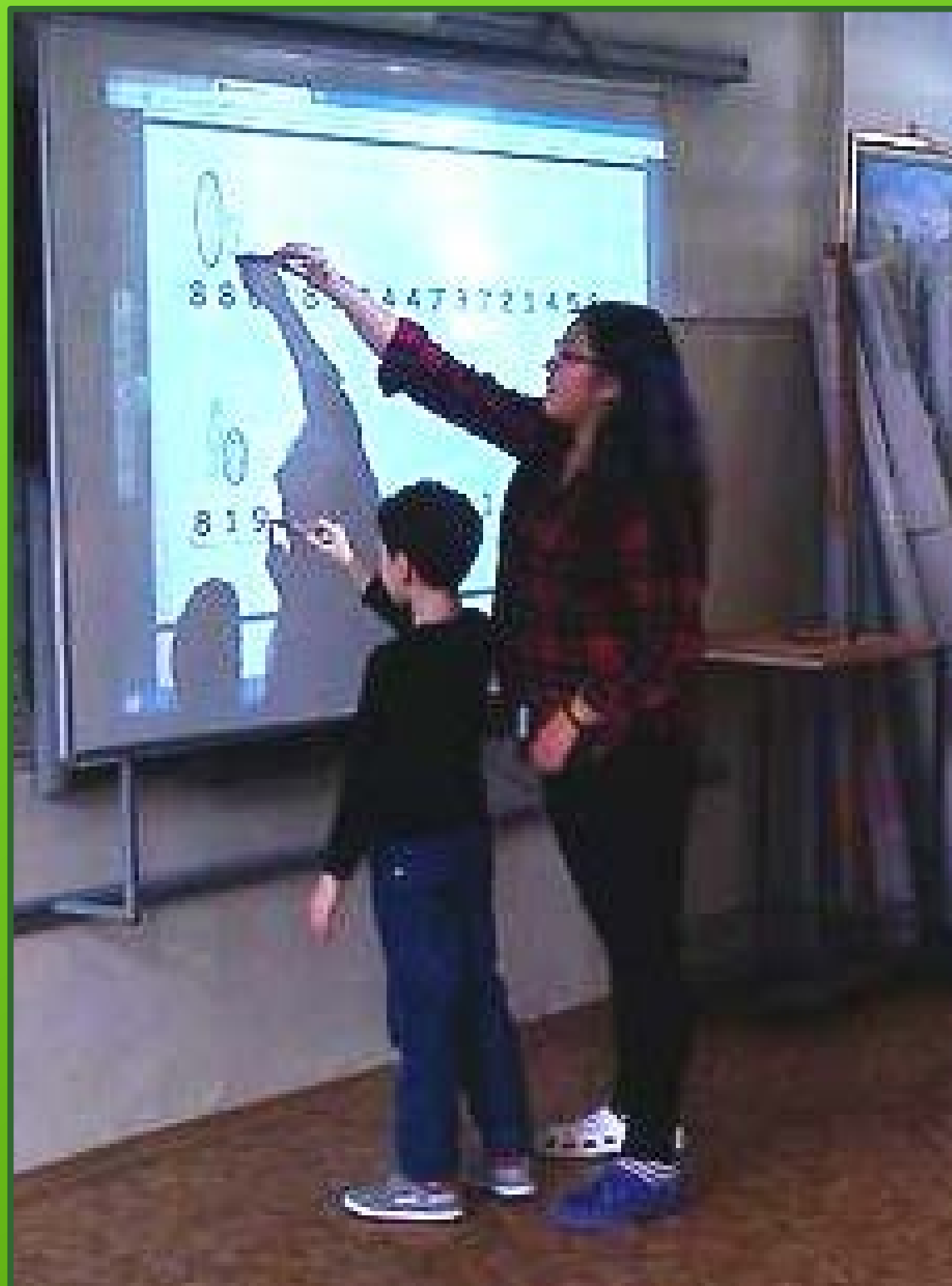
$$54-5=49$$

$$49:7=7$$

$$7+2=9$$

$$9.5=45$$

$$7:7=1$$







5	1	5	1	1	2	3	9	7	2	9	5	4	9	7
					8									
8					0	7	5	1	6	9	1			
6		4	0	2	8	0				3				
4					6					6				5
8					4	9	3	6	3	9	2	4	1	5
3		1			0			7		9				2
2	8	5	2	3	1	4	2	7		7				5
8		6		0				6		2				3
1		9		1				0		9				
7		0		0						0				
4				3	5	8	4	0		8			8	
3				7				4	2	6	7		6	
7										4			4	
7							1	3	5	8	9	3	8	6





Výsledek je násobkem 11, příklad musí obsahovat devítku. Celkem existuje 7 řešení (31922, 42933, 53944, 64955, 75966, 86977, 97988)



abaku
*
g a *
A
*
š k o
*
t u t o

